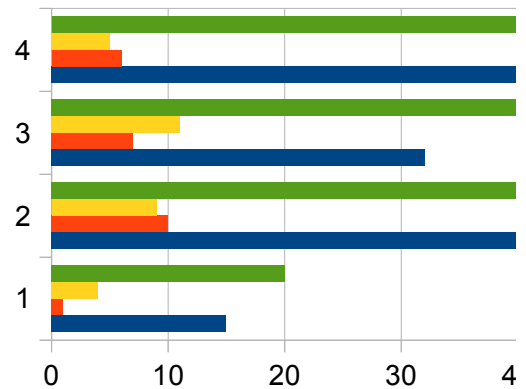


Q1. How often do you visit St Mark's?

18/03/13

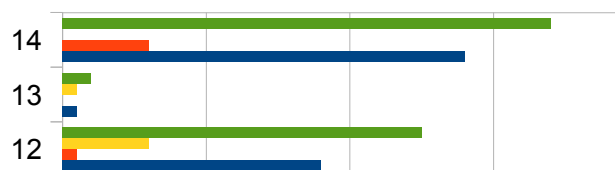
more than once a week	15
between once a week and once a month	54
between once a month and once a year	32
less than once a year	42
Total responses to question	143
Total questionnaires received	135



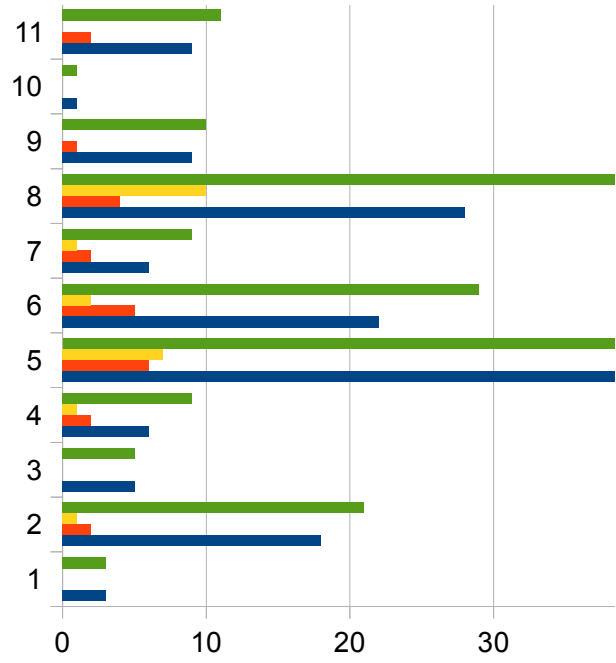
Q2. Which activities do you participate in?

18/03/13

Ballroom dancing	3
Battery Club	18
Brownies	5
Choir	6
Church services	50
Coffee morning	22
Live at home	6
Parish council	28
Private event	9
Scottish dancing	1
Tai chi	9
Women's institute	18
Yoga	1
Other (Fete, Jubilee Party, Sales)	28
Answered question	143

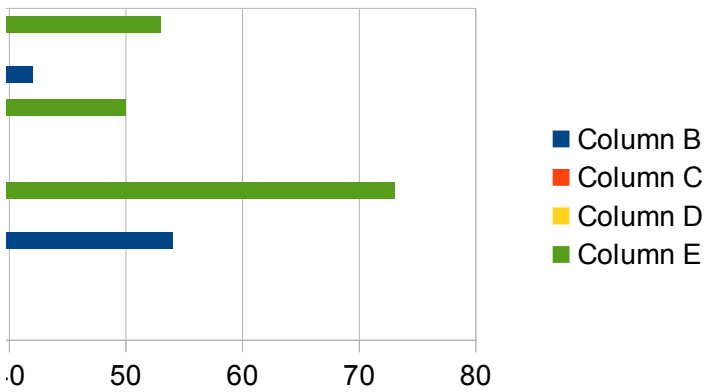


Sheet1



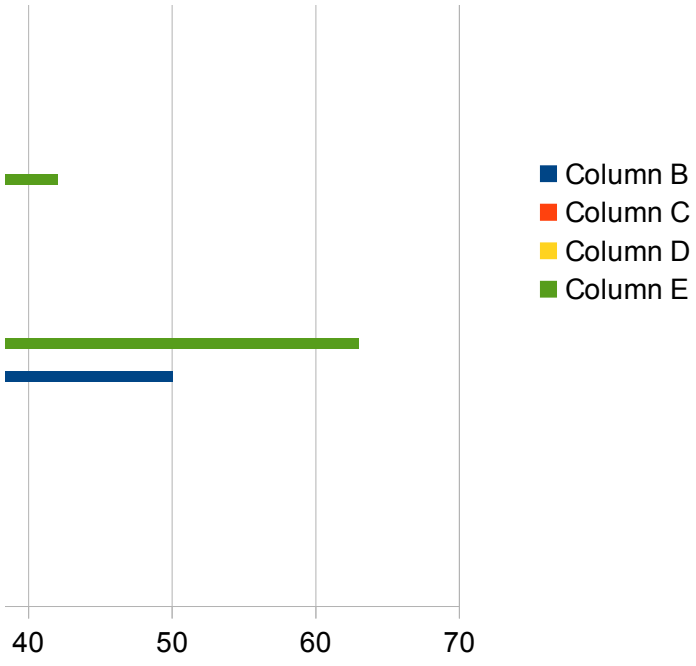
Sheet1

17/04/13	Online	No. response	% response
1	4	20	10.20%
10	9	73	37.24%
7	11	50	25.51%
6	5	53	27.04%
24	29	196	100.00%
22	29	186	



17/04/13	Online	No. response	% response	Rank
0	0	3	1.55%	
2	1	21	10.82%	6
0	0	5	2.58%	
2	1	9	4.64%	
6	7	63	32.47%	1
5	2	29	14.95%	4
2	1	9	4.64%	
4	10	42	21.65%	2
1	0	10	5.15%	
0	0	1	0.52%	
2	0	11	5.67%	
1	6	25	12.89%	5
0	1	2	1.03%	
6	0	34	17.53%	3
22	29	194		

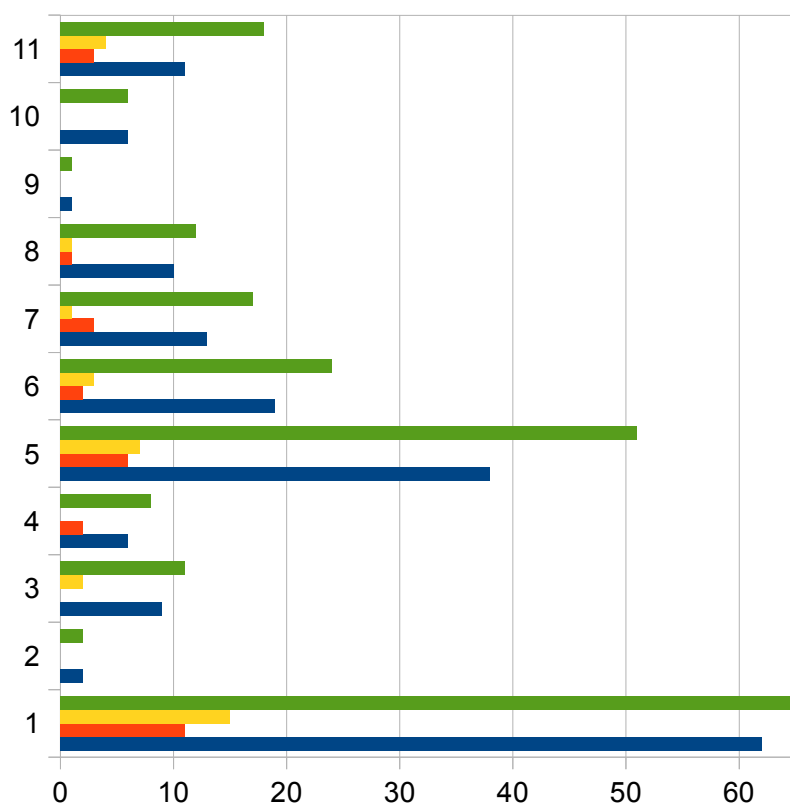
--	--	--



Q3. Which community centres do you visit?

18/03/13

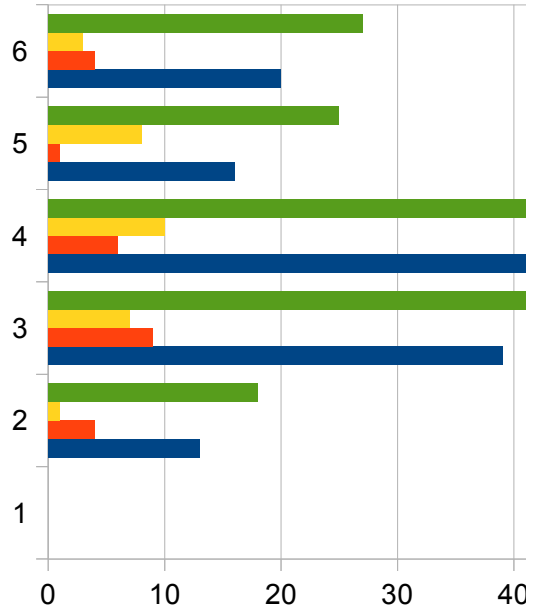
Badger Farm	62
Colden Common	2
Hursley	9
Kings Worthy Jubilee Hall	6
Littleton	38
Otterbourne	19
Shawford	13
Sparsholt	10
South Wonston	1
Twyford	6
Other	11
Answered question	147



Q4. What is your opinion of facilities at St Mark's?

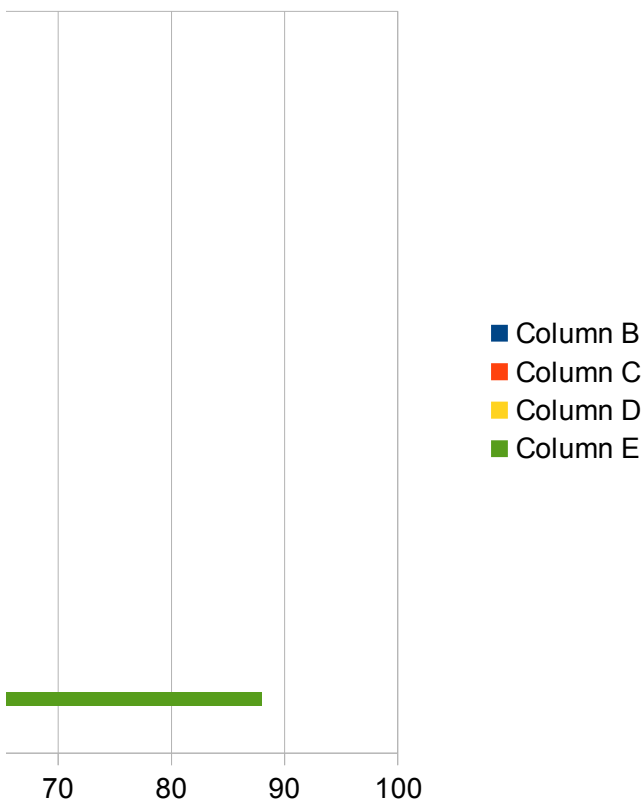
18/03/13

Excellent	0
Good	13
Average	39
Poor	55
Very poor	16
Don't know	20
Total responses	143

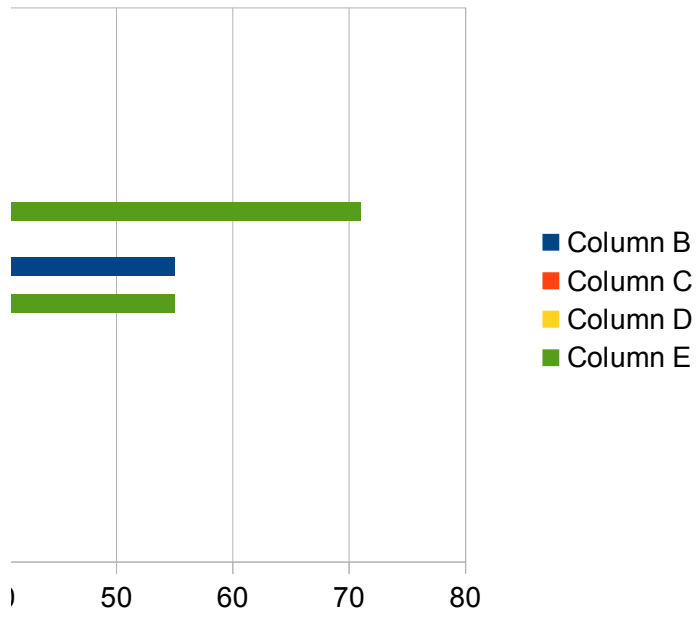


Sheet2

17/04/13	Online	No. Response	% response	Rank
11	15	88	44.00%	1
0	0	2	1.00%	
0	2	11	5.50%	
2	0	8	4.00%	
6	7	51	25.50%	2
2	3	24	12.00%	3
3	1	17	8.50%	5
1	1	12	6.00%	6
0	0	1	0.50%	
0	0	6	3.00%	
3	4	18	9.00%	4
24	29	200		



17/04/13	Online	No. Response	% response
0	0	0	0.00%
4	1	18	9.18%
9	7	55	28.06%
6	10	71	36.22%
1	8	25	12.76%
4	3	27	13.78%
24	29	196	100.00%



Q5. Which new facilities would you like to see?

18/03/13

Large hall for 100 people	79
Separate meeting room	64
Dedicated worship area	54
Well equipped kitchen	86
Reception area	50
Modern toilet facilities	85
Office	17
Better heating	88
Additional parking	41
Other	9
Answered question	143

Q6. Would you use community centre?

18/03/13

Yes	116
No	15
Total responses	131

Q7. Which activities would you participate in?

18/03/13

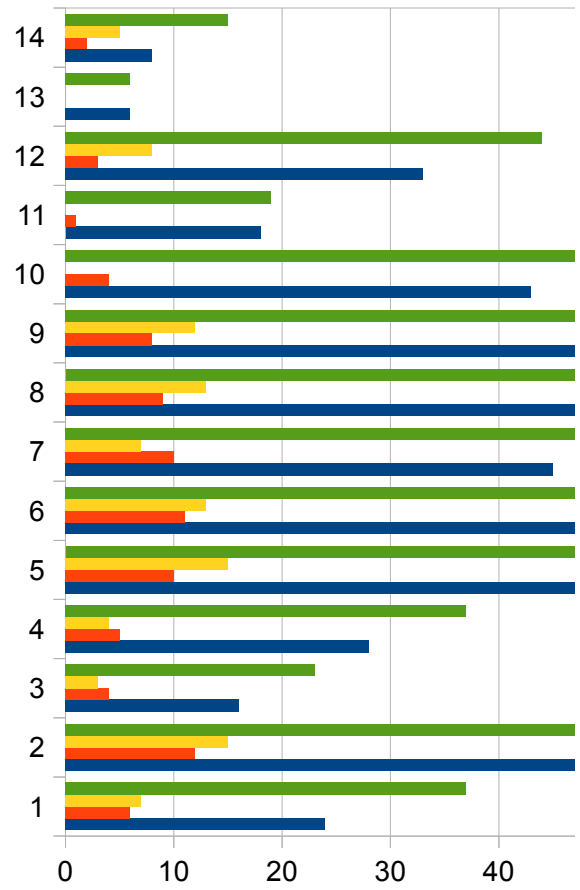
Dance	24
Fitness	47
Lifestyle	16
Sporting	28
Special interest	53
Discussion group	52
Church services/groups	45
Theatrical events	56
Musical events	60
Older persons club	43
Lunch club	18
Womens group	33
Youth group	6

Other

8

Answered question

143



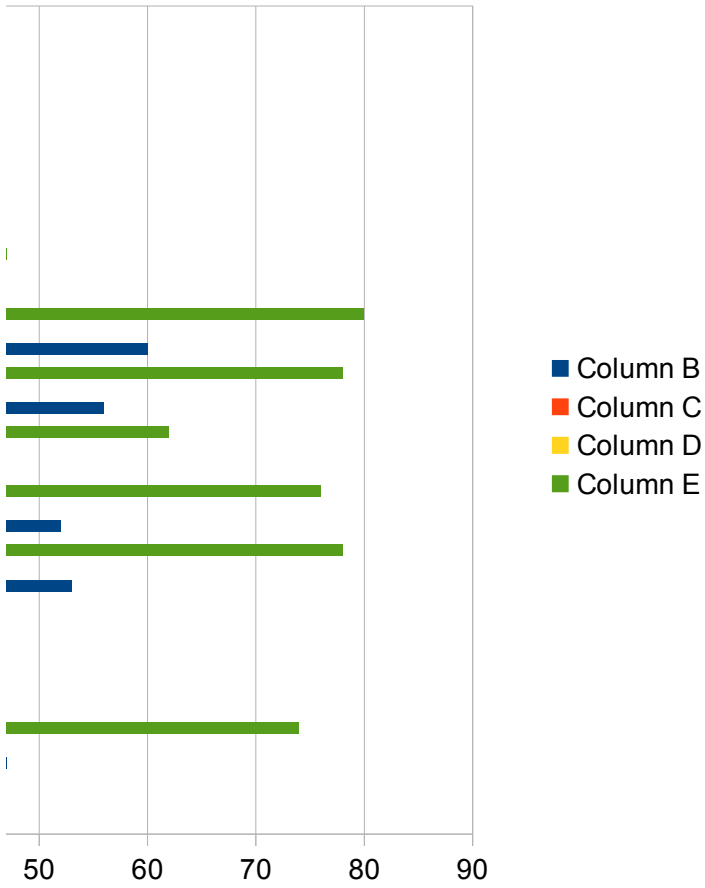
Sheet3

17/04/13	Online	No. Response	% response	Rank
10	17	106	54.08%	4
11	15	90	45.92%	5
7	11	72	36.73%	6
15	22	123	62.76%	2
5	9	64	34.78%	7
12	24	121	61.73%	3
2	3	22	11.22%	9
14	21	123	66.85%	1
9	15	65	33.16%	8
1	1	11	5.61%	
24	29	196		

17/04/13	Online	No. Response	% response
23	27	166	90.22%
1	2	18	9.78%
24	29	184	100.00%

17/04/13	Online	No. Response	% response	Rank
6	7	37	20.11%	9
12	15	74	40.22%	5
4	3	23	12.50%	
5	4	37	20.11%	10
10	15	78	42.39%	2
11	13	76	41.30%	4
10	7	62	33.70%	6
9	13	78	42.39%	3
8	12	80	43.48%	1
4	0	47	25.54%	7
1	0	19	10.33%	
3	8	44	23.91%	8
0	0	6	3.26%	

2	5	15	8.15%
24	29	196	



Q8. Would you organise any activity?	18/03/13
Yes	29
No	103
Total responses	132

Q9. Would you contribute to construction?	18/03/13
Charitable donations	69
Council Tax payments	47
Organising fundraising	15
Administrative activity	19
Design/project management activity	6
Other	4
Answered question	143

Q.10 Would you help run community centre?	18/04/13
Yes	24
No	112
Total responses	136

Sheet4

17/04/13	Online	No. Response	% response
2	13	44	23.91%
21	16	140	76.09%
23	29	184	100.00%

17/04/13	Online	No. Response	% response
3	17	89	45.88%
6	10	63	32.47%
4	7	26	13.40%
0	8	27	13.92%
2	4	12	6.19%
1	3	8	4.12%
22	29	194	

17/04/13	Online	No. Response	% response
0	8	32	17.02%
23	21	156	82.98%
23	29	188	100.00%

Q11. Where do you live?

18/03/13

Downlands/OB Crescent/Crescent Close	8
Compton way/Compton Close South View	20
Austen Avenue/Keats Close	5
Parliament Place	2
Olivers Battery Gardens/ Southview Park Homes	8
Olivers Battery Road/Shepherds Close	24
Mountview/ Seldon Close	8
Priors Way/Partridge Down/Plovers Down	9
Old Kennels Lane/Farley Close/Momford/Beyne	25
Braeside Close/Treble Close/Lake Drive	6
Broadview Lane/Beech Close/Pine Close	3
Sunnydown/Old Kennels Close/Fairway Drive	8
Lisle Close/Wedmore Close/Bridleway	3
Olivers Battery Road North/Fairfax/Westminster	9
Total responses	138

Q.12 How old are you?

18/03/13

Under 25	3
25-34	0
35-44	4
45-54	20
55-64	21
65-74	38
75-84	35
Over 85	17
Total responses	138

Q.13 How long in Olivers Battery?

18/03/13

Sheet5

< 1 year	3
1-5 years	14
6-15 years	38
16-25 years	24
26-50 years	44
>50 years	14
Total responses	137

Sheet5

17/04/13	Online	No. response	% response
1	0	9	5.59%
2	0	22	13.66%
0	0	5	3.11%
2	0	4	2.48%
0	0	8	4.97%
3	0	27	16.77%
0	0	8	4.97%
3	0	12	7.45%
4	0	29	18.01%
0	0	6	3.73%
2	0	5	3.11%
2	0	10	6.21%
0	0	3	1.86%
4	0	13	8.07%
23	0	161	100.00%

17/04/13	Online	No. response	% response	2005	2000
0	0	3	1.85%	0.00%	0.00%
0	0	0	0.00%		
1	0	5	3.09%		
5	0	25	15.43%		
4	0	25	15.43%		
6	0	44	27.16%		
5	0	40	24.69%		
3	0	20	12.35%		
24	0	162	100.00%		

17/04/13	Online	No. response	% response	2005	2000
----------	--------	--------------	------------	------	------

Sheet5

0	0	3	1.86%
2	0	16	9.94%
9	0	47	29.19%
3	0	27	16.77%
7	0	51	31.68%
3	0	17	10.56%
24	0	161	100.00%